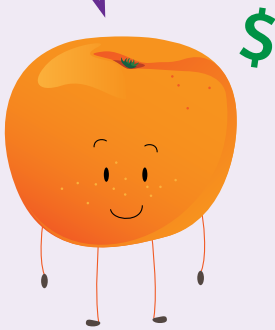
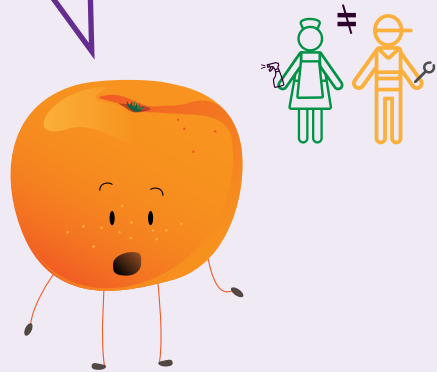


We can compare!

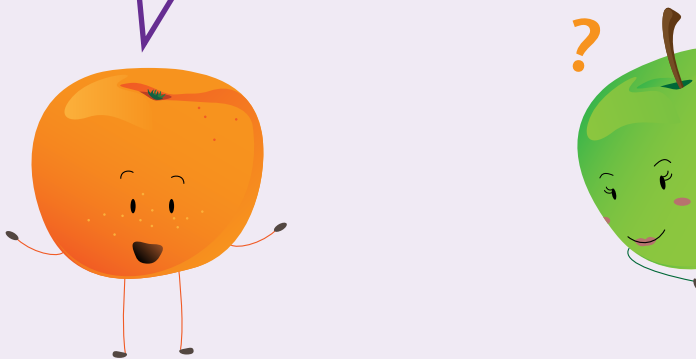
Pay inequity is when 2 different jobs of equal value don't earn the same salary.



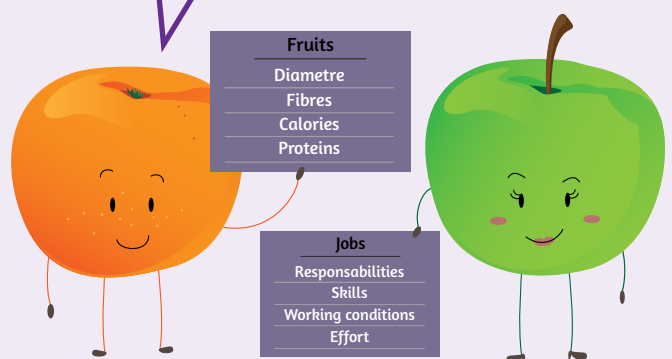
You are surely wondering: Mister Peel, how can we compare 2 different jobs?



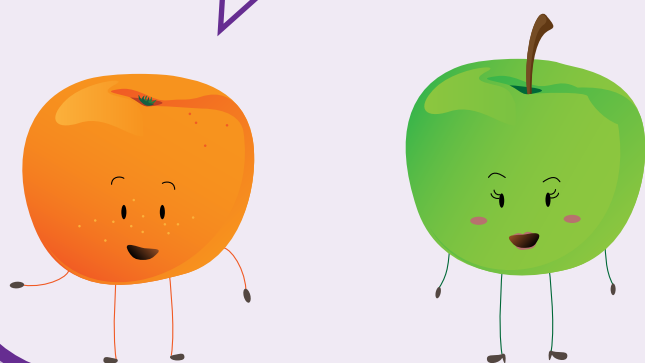
Concentrate, I will explain... Well, it's like comparing me to Mrs. G. Smith!



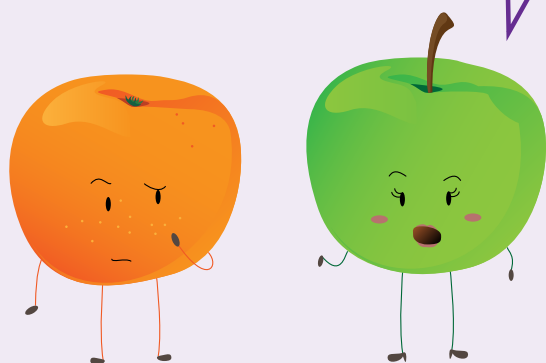
With the help of 4 factors, we can compare our values just like we compare the value of different jobs!



So, even if we are 2 different fruits, our values can still be compared! Orange you glad I explained?



Yes, now I understand! But, can you explain what is the "wedge" gap?



It's time for a change.
Pay equity NOW!



Coalition for Pay Equity
Coalition pour l'équité salariale
New Brunswick • Nouveau-Brunswick

